

My favorite covers with Mols issues

**Used from 1895 up to
the end of 1932**

Summary of Mols issues

Mols issues	issued	ended
Mols XIX	25/11/1894	31/12/1900
Mols 15c-40c	21/11/1896	31/07/1909
Mols 3.50F - 10F	04/05/1898	31/07/1909
MOLS XX	25/05/1900	31/07/1909
CB overprint	1/01/1909	31/03/1916
unlingual issue	15/06/1909	31/03/1916
bilingual 1910 -1	1/02/1910	31/03/1916
bilingual 1910-2	15/09/1910	31/03/1916
bilingual 1910-3	1/12/1910	31/03/1916
bilingual 1915	1/10/1915	31/12/1921
bilingual 1915- 15c/1F/5F	1/10/1915	31/12/1932
overprinted 1921 issue	1/07/1921	31/12/1932
overprinted Malines issue	1/01/1922	31/12/1932
overprinted Boma issue-1	12/01/1922	31/12/1932
overprinted Boma issue-2	24/12/1922	31/12/1932
overprinted Boma issue-3	4/01/1923	31/12/1932
overprinted E'ville issue	4/01/1923	31/12/1932
campagnes coloniales	8/07/1925	31/12/1926

1895 – 1908

Congo Free State

The first stamps Mols were issued on 25 November 1894 at Brussels / Belgium ; then transported by ship to Congo, they arrived at the end of 1894. The first use recorded are in the beginning of 1895 (5 January 1895).

1895



Framed
« Recommandé
» with manuscrit
serie number
« N°565 »

Large registered cover from Boma on April 1st, 1895 to Belgium

Top left corner « 90/6 » = 90 gr = 6th rate = 6x 50c + 50c for registration = 3.50 Fr

The 3,50 F stamp will be issued only in 1898 - Franked by 1F violet (3x) + 50c green

1896



First state of the cover,
before update of address
and additional stamps.

- 1) Cover sent from Matadi (May 2nd, 1896) to Boma – Domestic rate at 15c franked by a strip of 5c dark brown (as shown on right top corner of this page)
- 2) The addressee was returned in Gand / Belgium - Additional franking of 35c for international rate at Boma (May 7th) with three 10c blue and 5c red-brown – backstamped Gand on June 26th. Postman cancel « 14 » in circle applied at Gand.

1897



FRONT



REVERSE

- 1) Small cover sent from Tumbu-Mani (July 7th, 1897) to Leopoldville – domestic rate at 15c franked by 5c red-brown & 10c blue (the card was probably written with more than 5 words and thus off printed matter rate at 10c) – transit by Lukungu, Matadi and Boma
- 2) The addressee was returned at Seraing / Belgium - forwarded – Congolaise « T » with 0,35 in blue pencil (missing franking for international rate of 50c.) Taxation applied at arrival at the 2x 35c with 2 Belgian postage due stamps of 20c & 50c on 29 October 1897. – bad taxation because, according to UPU, only single taxation for forwarded mail. (Note that a Belgian taxation for more than 50c is scarce.)

1898



Postal stationery at 15c (Stibbe # 16) – reply card (separate from double card 15c+15c – demand + reply) sent from Leopoldville 9 August 1898 to Lessines / Belgium where it arrived on 14 Sept. via Boma 16 August.

precursor of CARTE POSTALE INCOMPLETE marking : at post office, the postman put the “LEOPOLDVILLE” straight line cancel (oblique at left top corner) + handwritten note “carte incomplete” (incomplete card) to justify the missing of the demand card. (Ex Stibbe Collection – only one recorded)

The BOMA ,MATADI or BANANA CARTE INCOMPLETE

3 framed marks were created by Belgian Congo Post Offices because some addressees have filed a complaint for the steal of their reply card of the double postal stationery, by the Belgian postmen. In fact, no steal, because the senders sent only one card (having detach the reply card for another use)

1899



Cover sent from Banana (June 27th, 1899) to the German Governor of Cameroon ;
backstamped Lagos / Nigeria & Kamerun (August 1st, 1899).

Scarce frontier rate at 25c (in place of international date at 50c.)

Franked by 10c blue and 15c dark ochre.

1900



Cover sent from Stanleyville in 1900 to Brussels / Belgium ; backstamped Leopoldville (Oct 24th, 1900) & Boma – Brussels arrival (Nov 22th).

International postage rate = 50c. franked by the both 25c Mols - orange & blue

That was only possible between May 25th (new issue of Mols stamps with the new UPU colour) and December 31th, 1900

(out of use of the 25c orange of 1894 issue)

1901

Van Campenhout Frs et Sr. — N° 24036.

Kinshasa, le 7 août 1901.

Le fonctionnaire délégué par le Gouverneur Général,

E. Jacqumont

(1) Nom de la localité.
(2) Nom du propriétaire ou de la firme.
(3) Nom du district.




There were no revenue stamps in Congo Free State and the postage stamps were used as it on official documents such as « Permis de Port d'Armes » at 20 F of fees. Here a « Permis » type C for native plantation chief. (to be used against predators)

Delivered at the Lomani Company at Kinshasa on 7 August 1901 – blue flag cancel of District du Stanley-Pool.

C

ÉTAT INDÉPENDANT DU CONGO

Permis de Port d'Armes

PERMIS DE PORT D'ARMES

N° *1118*

Le capita de l'établissement de⁽¹⁾ *Yanga*
amartenant à⁽²⁾ *la Cie du Lomani,*

er, pour sa défense personnelle, le fusil à piston non rayé
s dans le district de⁽³⁾ _____, pendant un terme
écutives à compter de la date du présent permis.


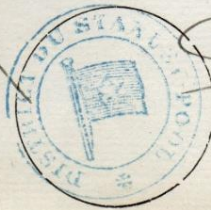
DÉSIGNATION ET DESCRIPTION	LETTRE ET NUMÉROS
<i>Fusil à piston non rayé 9 40</i>	

Kinshasa, le 7 août 1901.

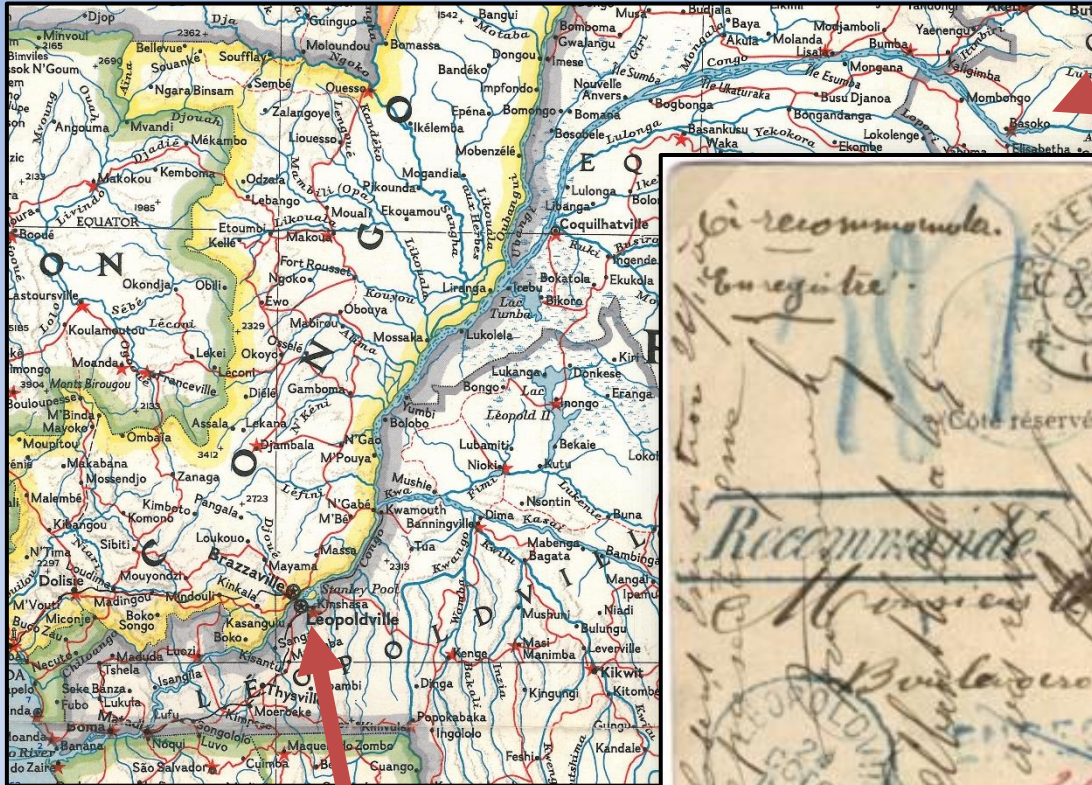
Le fonctionnaire délégué par le Gouverneur Général,

E. Jacqumont

(1) Nom de la localité.
(2) Nom du propriétaire ou de la firme.
(3) Nom du district.

1902

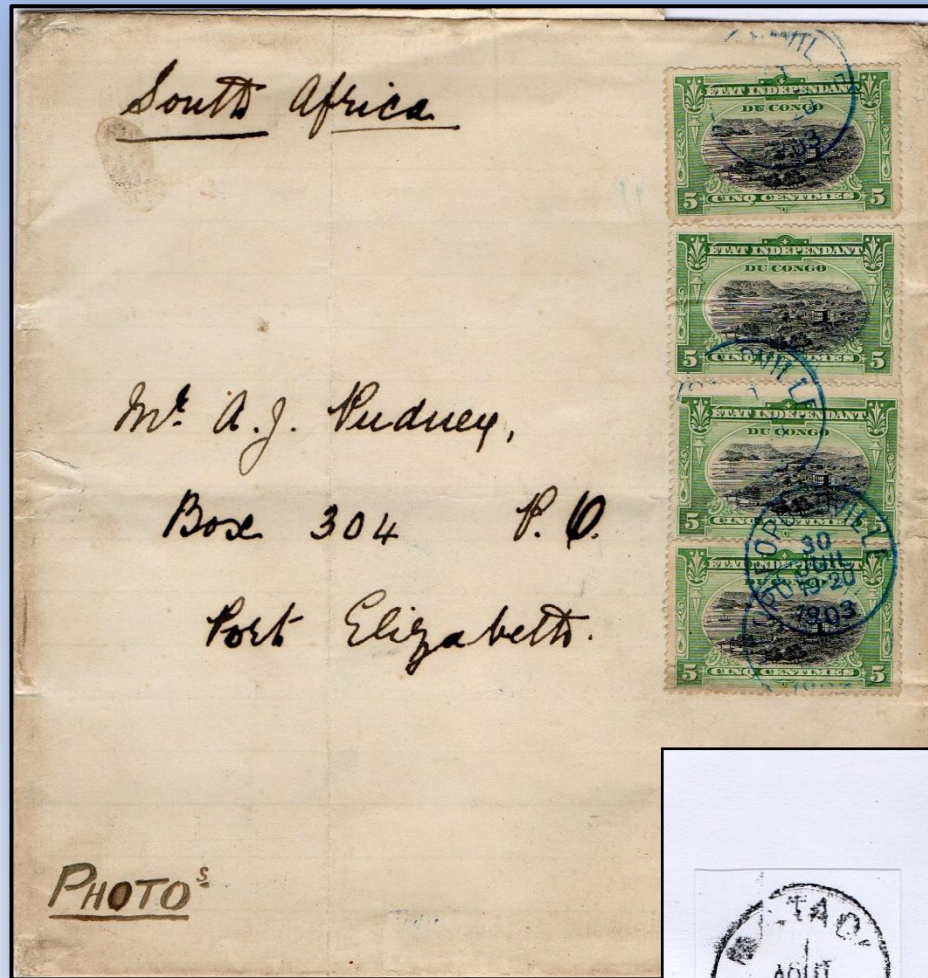


« **ENREGISTRE** » special rate for a travel from Basoko on 30 Sept. 1902 (upper Congo) to Leopoldville with additional fees of 15c. Recorded on nr 244 + red note « to be registered » in red ink.

Registration has been applied at Leopoldville on 24 October 1902 after cancelling the ENREGISTRE mark and recorded on nr 1924 – at this moment, full registration is active to the Belgian addressee – arrival at Brussels on 25 Nov.

Postcard rate at 50c. (old rate applied after May 1st, 1902 – new rate is 15c) + 50c for registration

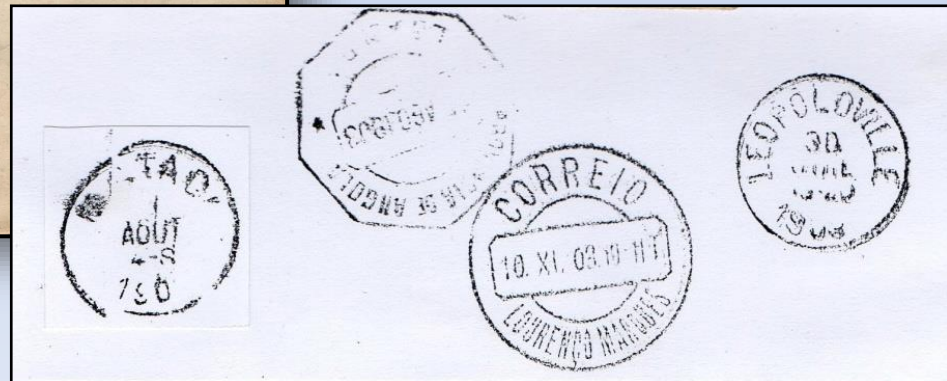
1903



Cover sent from Leopoldville
on 30 July 1903 to Port Elizabeth /
South Africa - transit by *Matadi*,
Loanda / Angola
&
Lourenço Marques / Mozambique.

Printed matter rate at 10c / 50gr for
« Photos »

Franked by four 5c green Mols
for a weight of 51-100gr



COMPAGNIE DU KASAI

Société à responsabilité limitée

1904

Monsieur le Directeur

de la Compagnie du Kasai

41, rue de Naples, 41

BRUXELLES

Large registered business cover « Compagnie du Kasai » sent from Leopoldville (Nov 2nd, 1904) to Brussels – 895 gr = 60th rate
60 x 50c + 50c registr. = 30.50 F over franked at 32.5 F
(bad weighing made by sender) – highest franking recorded
Split vertical strip of 9 (4th column – sheet pos 4 to 44)
of 3.50 F vermillon + 1F carmine.

1905



Small cover sent from Boma 11 Dec. 1905 to Brussels / Belgium.

Printed matter rate at 10c. Franked by 10c carmine Mols.

VÉRIFIÉ mark was applied by the Post Office for the agreement of the reduced rate, proved its check : **opened** cover and **less than 5 words** on text on the letter/card.

1906



Cover sent from Thysville on 7 November 1906 to Boma where it arrived on 9 Nove.

Domestic rate at 15c. / 15gr

Franked by 5c green + 10c carmine Mols

Addressee = Capt. Daniell c/o **Hatton & Cookson Co** at Boma

(British Company installed at Boma from 1877)

1907



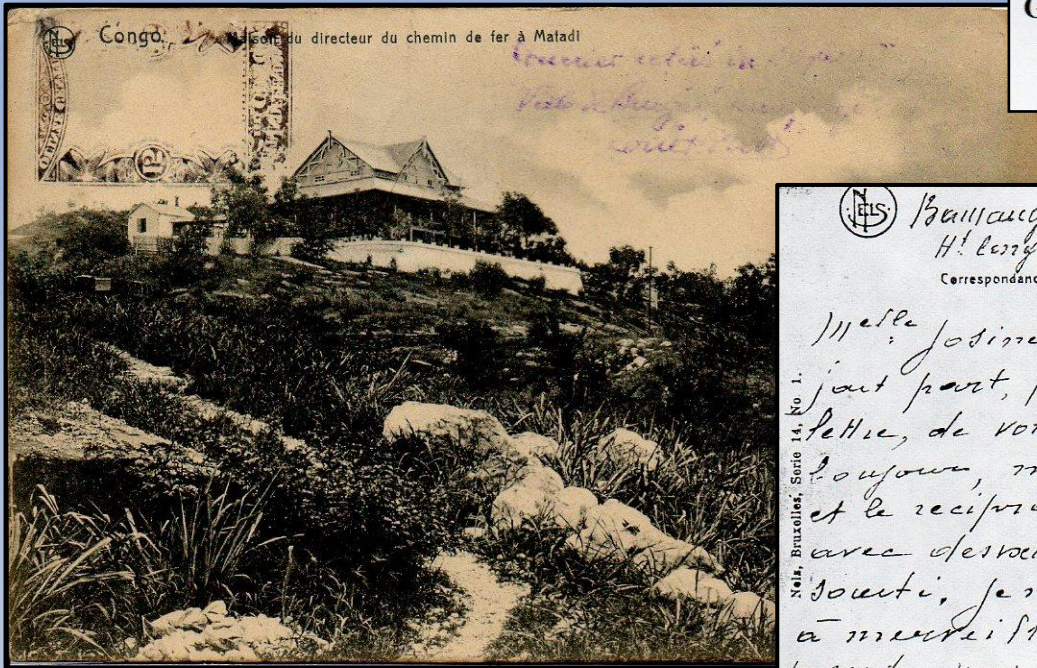
Registered cover from Inongo 1907 to Matadi – registration applied at Inongo with unframed RECOMMANDE blue straight line on nr 115

(it was the beginning of the progressive registration in the Upper Congo from 1905 to 1909)

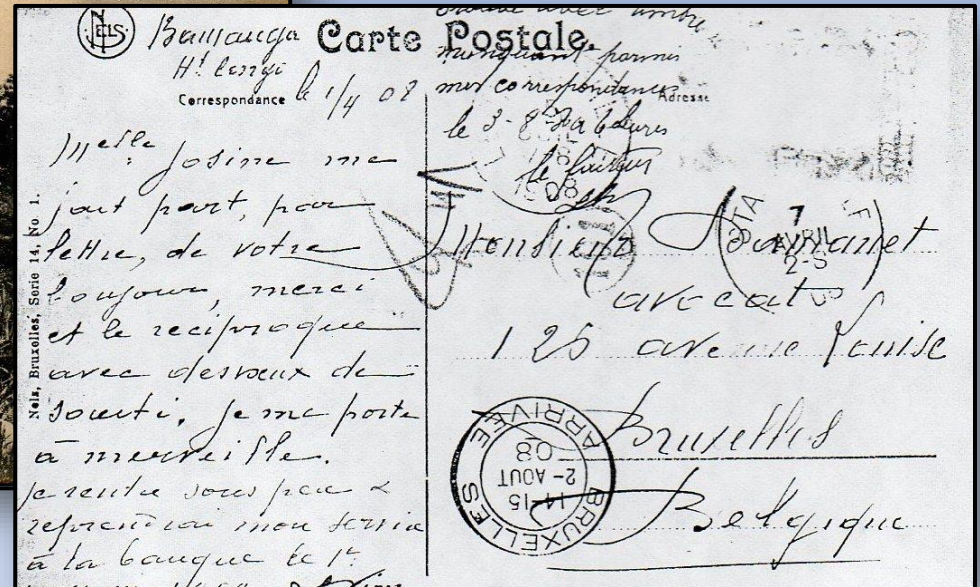
Domestic rate of 15c / 15gr + 25c for domestic registration

Transit by Leopoldville on reverse.

1908



Griffe violette : "Courrier retiré du vapeur
"Ville de Bruges" naufragé
Louis Brion"



Picture postcard send from Upper Congo on 1 April 1908 to Brussels where it arrived on 2 August ; the stamp was cancelled in Stanleyville 7 April. **Shipwrecked on 15 April in Congo River** and recovered two months later with his stamp missing and a trace of a 15c oxidized on view side from another card of the mailbag.

Sorted at Leopoldville on 5 July 1908 to then resumed its journey to the addressee.

3 lines violet special mark applied to justify the delay.

1909

Belgian Congo

provisional overprinted issues
and new definitive issues

1909



2nd weight international rate from Léopoldville 1909 to Brussels → 2x 50c
franked by 50c olive with CONGO BELGE overprint applied Locally (type L5) +
10c red PRINCE Issue with typographic CONGO BELGE overprint +
+ 40c blue-green with typographic CONGO BELGE overprint.

1910



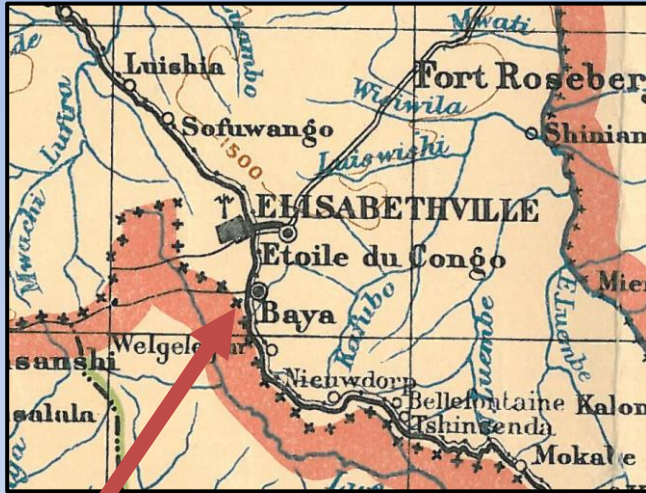
Registered **Unilingual postal stationery** written at **Elisabethville** to the Belgian Consulate at **Smyrne** / Turkey via London - cancelled by LUKAFU – **march 31th, 1910** – second cancel borrowed at Lukafu post office - first date known.

Rate : international postcard at 15c + registration at 50c.

Two additional 25c with typographic overprint (**misplaced to centre**) – rate at 65c.

Unframed RECOMMANDE recorded by number 252.

1911



MIKOLA post office was opened on March 1911 – on 15 Sept, his name was changed to M'Baya and later finally to BAYA.

Only 2 items are currently recorded with this cancellation.

Postal stationery from Mikola 19 Oct. 11 to Bois-de-Villers / Belgium with an additional 5c Bilingual 1910 issue.

1912



Large official registered cover from Leopoldville (8 June 1912) to Brussels.

New 1910 rate : 3rd weight rate (45gr) = 3x 25c + 25c registration

Franked by 1F carmin with CONGO BELGE typographic overprint

Beginning of the registration label in place of framed / unframed marks

1913



Large registered business cover sent from Dima on 1 Oct 1913 to Antwerp / Belgium.

10 th weight rates (140 gr) = 10x 25c + 25c registration = 2.75 Fr

Franked by 50c Unilingual issue + 25c & 1F (pair) Bilingual 1910 issue

1914



Small cover sent from Irumu (3 Nov. 1914) to Tunis (Tunisia)
via Entebbe / Uganda & Mombasa / East Africa Protectorate.

Printed matter postage rate at 10c. + **straight line « VERIFIE »** applied by Irumu
postman after his checking of the business card (only 5 words was authorized)

Scarce used of this mark with Bilingual 1910 issue.

This mark was also used as censor mark at Elisabethville during WWI

1915



Registered AR cover sent from Luebo (13 Sept. 1915) to France by French maritime line Matadi à Bordeaux LL N°2.

2nd rate = 2x 25c + 25c registration + 25c AR = 1 F

Franked by 1F carmine with CONGO BELGE typographic overprint (very late use)

1916

May-June 1916
By Diplomatic mail



Registered postal stationery
written at Eala on June 14th,
1916 to Brussels – posted at
Coquilhatville on June 16th

Eala, le 14 juin 1916

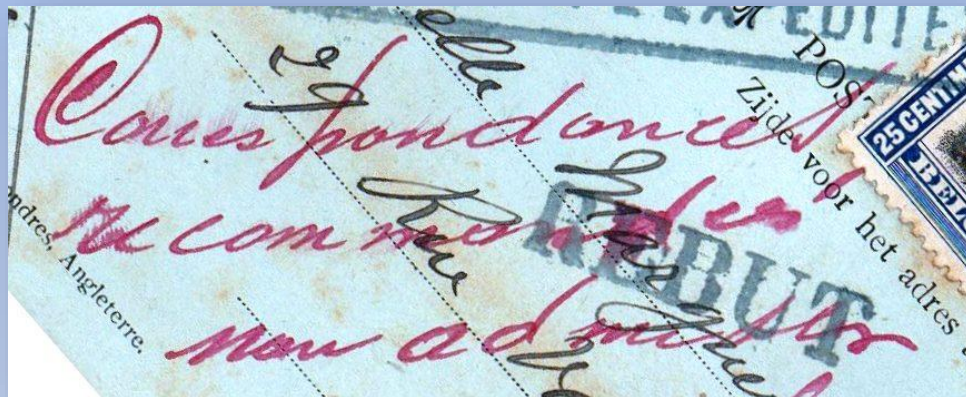
Ma chère Marguerite,

Il paraîtrait qu'on nous pourrions correspondre avec la Belgique! - Je m'empresse donc de t'adresser quelques mots qui te trouveront, j'espère, ainsi que toute la famille, tous bien portants - Ici, à Eala,

Text : « Il paraîtrait que nous puissions correspondre avec la Belgique. Je m'empresse donc de t'adresser quelques mots qui te trouveront, j'espère, ainsi que toute la famille, tous bien portants. Ici à Eala, (...) »

1916

May-June 1916
By Diplomatic mail



Postal note in red ink probably
applied at Léopoldville by postman
« **Correspondances
recommandées
non admises** »

AVIS AU PUBLIC.

Boma, le 10 mai 1916.

J'ai l'honneur de porter à la connaissance du public que M. le Ministre des Colonies m'a annoncé qu'il s'efforcera à titre d'essai de faire parvenir à destination, par la voie diplomatique, les correspondances que des sujets belges résidant au Congo voudraient adresser à leurs parents résidant en Belgique.

Les correspondances affranchies au tarif international pourront donc être remises à la poste à partir de ce jour. Elles ne sont pas susceptibles de recommandation.

Ces correspondances seront censurées et elles ne pourront comporter qu'une page d'écriture très lisible. Une seule lettre ou carte par personne sera admise à l'expédition.

This red note and the return marks were probably applied at Leopoldville (no datestamp) where the mail was checked – according to the note of the General Governor Henry, the mails to Belgium cannot be registered, applied thus by error at Coquilhatville – then the card has been returned to the sender.

1917



Part of telegraphic form with EAAOB stamps (1F – strip of three)
+ 10c & 5F unoverprinted Bilingual 1915 issue
all cancelled with handwritten date « 14-3-17 » and straight line USUMBURA.

1918

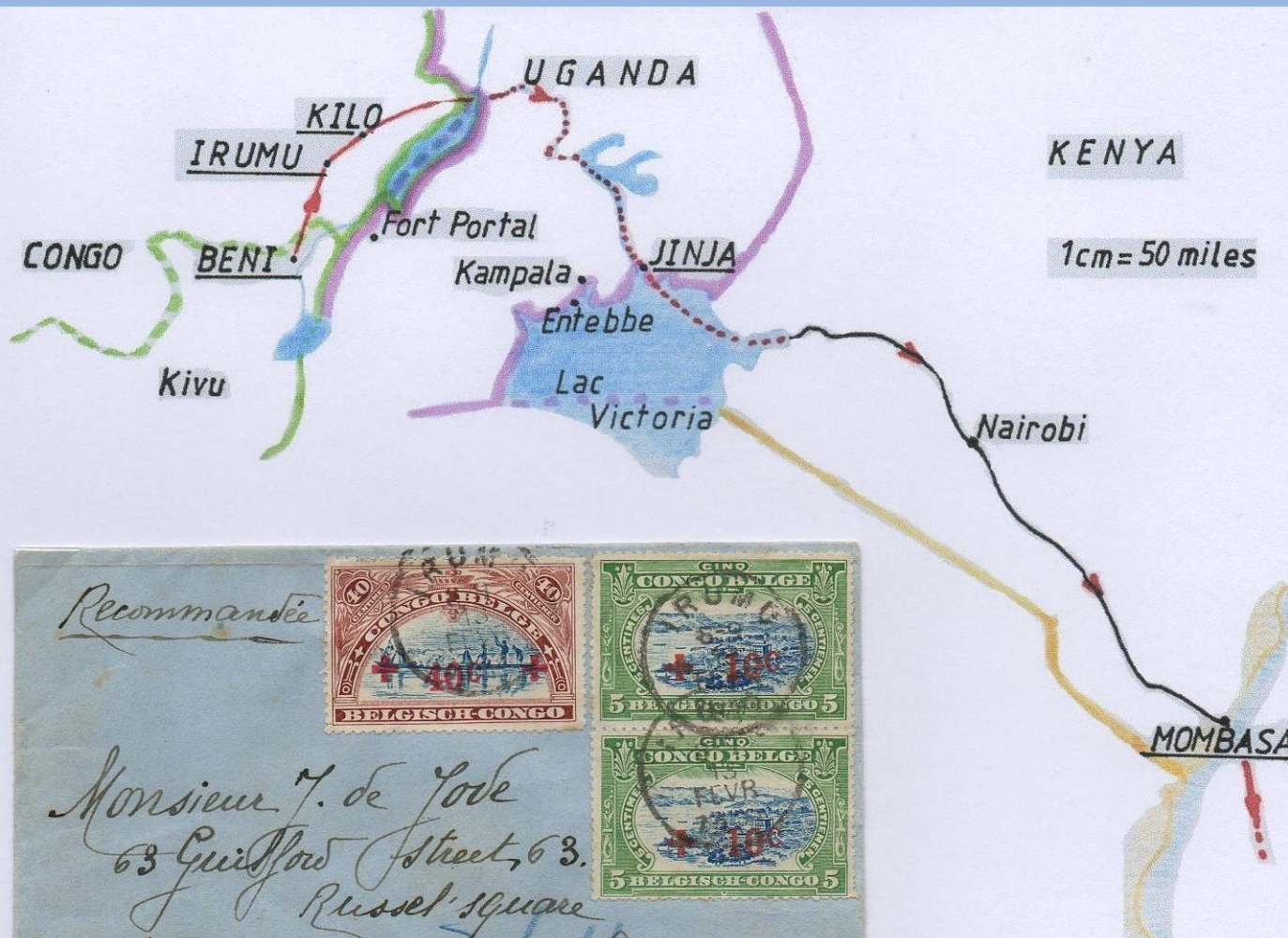


Registered cover send from Kitega / German East Africa with Belgian Occupation
(BPCVPK n°4 cancellation – March 18th, 1918) to Belgian Army in Operation
– transit by Kigoma.

and a French maritime ship of « La Réunion à Marseille » line.

Military Free Postage + 25c for registration - unoverprinted Bilingual 1915 issue

1919



Registered cover from Irumu 1919 to
England – rate = 25c+ 25c (registr)
Route by Kilo, Jinja & Mombasa
Red Cross 1918 issue (Thomas collection)

1920



Cover sent from Johannesburg / South Africa in 1920 to Elisabethville / Katanga – under franked and taxed at 30c applied with 2x - 15c bilingual 1915 issue (IV1+C)

With framed TAXES type IX and Elisabethville cancel

First postage due stamps were issued in July 1923.

1921



Registered cover from Sandoa to USA – Esperanto publicity (scarce from Congo)

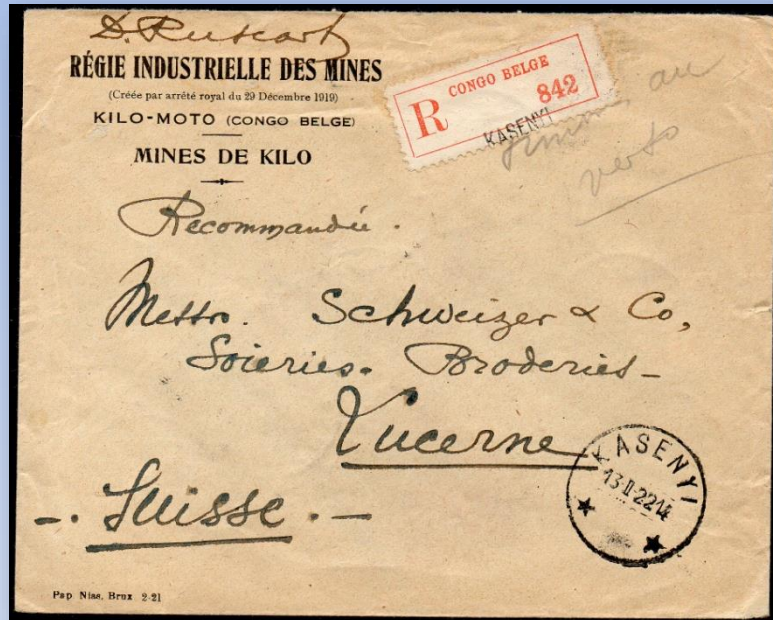
Note « parvenue ouverte à E'ville / poids constaté à l'arrivée de 70 gr »

(arrived opened at E'ville / checked weight of 70gr)

Repaired by 3 sealing labels applied at E'ville transit

4th rate = 4x25c + 25c registration franked by 5c (2x) + 25c + 40c + 50c bilingual 1915

1922



Registered cover from Kasenyi 1922 to Switzerland via Mombasa and french paquebot Dumbea of maritime line La Réunion à Marseille nr 3.

Rate = 50c + 50c (registration)

Franking = 15c bilingual 1915 - strip of 5 (scarce IV3+C) + 25c/15c 1921 issue.

1923



Postal stationery with view used at Matadi (nov 28th, 1923) on board of steamship SS MATEBA (old ship of CAN (Compagnie Africaine de Navigation) and bought in 1919 by the CBMC (Compagnie Belge Maritime du congo))

PAQUEBOT straight line of Anvers harbour applied at arrival on dec 28th, 1923.

1924



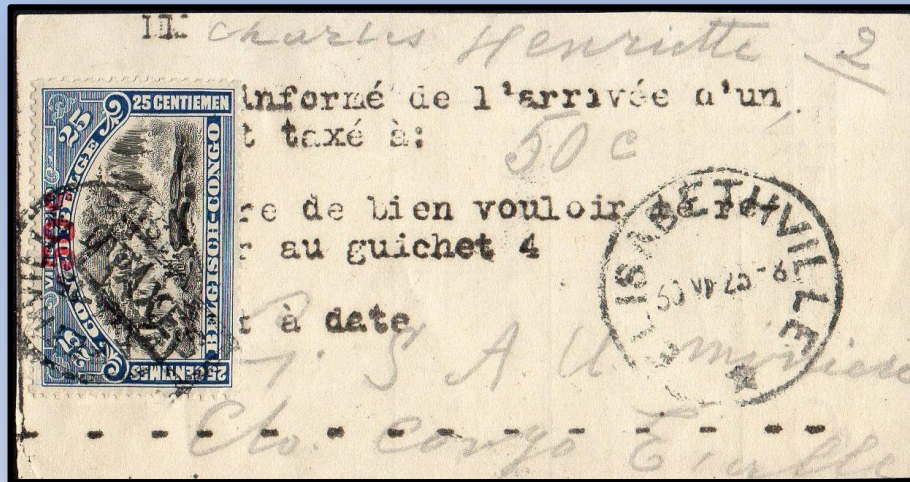
Registered cover from Rutshuru 1924 to
Belgium via Kabale / Uganda, Mbarara,
Mombasa and paquebot of french
maritime line La Réunion à Marseille nr 4.

2nd rate = 50c + 25c + 50c (registration)

Franking = Boma issue 10c/1F + 1921 issue
50c/25c + Vloors

Type 5 cancellations on Mols

1925



O BELC	
(1) Bordereau des perso	
(1) " "	
-Civil (célibataire, marié ou) Noms et prénoms des père mère et éventuellement du conjoint	Lie anté (2) nur de

Reused postal form as arrival label of taxed covers at E'ville post office.

The addressee was informed by the post office about the arrival of taxed letter which must be taken at office 4 – stamps (after payment of the tax) was put on the label and cancelled by the framed TAXES type IX and the office cancel. Note that we have both E'ville type 1 & new type 5 (star) cancellations on the same item.

1926



registered cover from Albertville 1926 to Switzerland

Rate = $1.25F + 0.75F + 1F$ (registration) = 3 F

Franking = 30c/10c (block of 8) 1921 issue + 15c bilingual 1915 (4x)

Route by Dar-es-Salaam and La Reunion à Marseille N°4 (paquebot of french maritime line)

1927



PS Stibbe RU18 from Ponthierville 1927 to Belgium / Postcard rate = 60c
Franking = « 15 » surcharge on PS & 30c/10c Malines issue + Vloors 15c.
The PS was out of use but not taxed.

1928

Internal registered
cover

Internal rate = 1F

Registration = 1.75F

Franked by

Vloors + Leys

Malines issue.

(over franking = 5c)

Rerouted – nice
business cover)

Leopoldville type 7
used on Mols issue



1929



Registered cover from Banana to Belgium. (Thomas collection)

2nd rate to Belgium = 1F + 60c + registration (2F)

Franking = Campagne Coloniale Mols 25c+25c FR+NL + Malines issue 50c/25c + 1921 issue 50c/25c (3x) + Stanley 60c.

1930

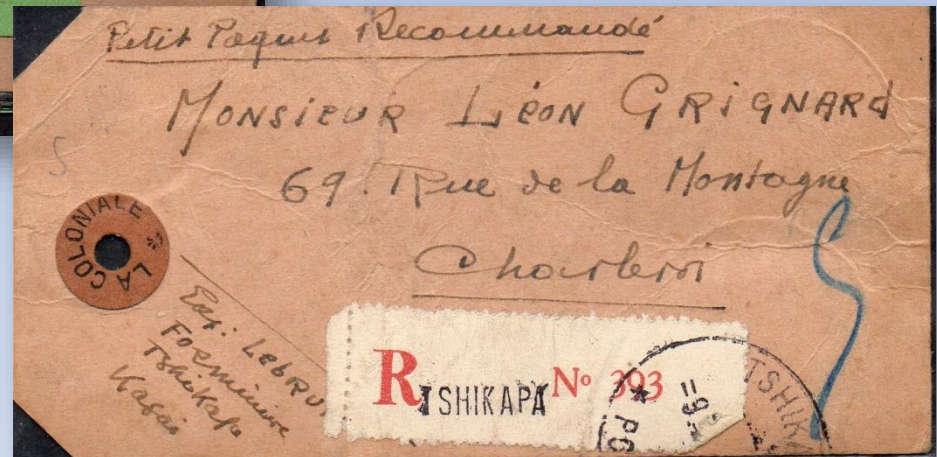


Postal Stationery Stibbe 50 with 1921 overprint from Bukama 1930 to Belgium
Rate = 60c for postcard to Belgium / Franking – Mols 1921 + Vloors + Stanley
rare use of cancel type 1.1-DMY on Vloors and scarce on Stanley

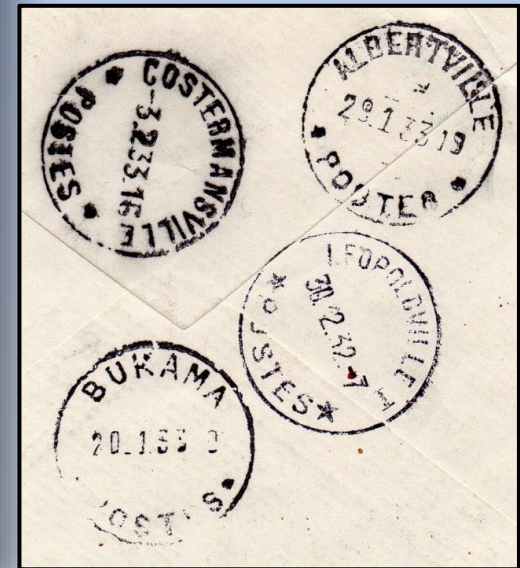
1931



Tshikapa 1931 – small packet card in registered to Belgium.
Packet weight on custom label =
0.550 kg
Tshikapa type 7 used on Mols
issue



1932



Registered cover from Boma December 27th, 1932 (5 days before the end of Mols use) to Costermansville (3rd Feb 1933) via Leo, Bukama & Albertville

2nd weight of domestic rate = 1.25 F + 0.75F + 2 F(registration) = 4 F

Franked by 1F & 3F Bilingual 1910 issue with typographic 1921 overprint

Cancellation : Boma type 7 on Mols.

Thanks for your attention.